



OUR VALUES



Pollution Incident Response Management Plan

Kurri Kurri Resource Recovery Facility

1800 180 180
recyclecentralgroup.com.au
info@centralwaste.com.au
8 Styles Street
Kurri Kurri NSW 2327
ABN: 44 604 989 433
[EPA Environmental Protection Licence Number 13013](#)



Pollution Incident Response Management Plan (PIRMP)

Version 7.0 (27/02/2026)
Planned review date (November 2027)

Uncontrolled when printed

Table of Contents

1	Document Properties	3
	Table 1 – Document Approval	3
	Table 2 – Summary of changes.....	3
2	Definitions and Abbreviations	3
	Table 3 – Definitions.....	3
3	Site Contact Information	4
4	Purpose Scope and Objectives	5
4.1	Scope	5
4.2	Objectives	5
4.3	Location	6
	Image 1 – Kurri Kurri facility location.....	6
4.4	Hours of Operation	6
	Table 4 – Permitted Operational Hours	6
5	Responsibilities	7
6	Notification Requirements	7
	Table 5 – Relevant Authorities Contact Details	7
6.1	Community and Neighbour Communication	8
7	Management of Risk.....	8
	Image 2 – Risk Matrix.....	9
7.1	Pre-Emptive Actions	9
7.2	Potential Pollutant Materials	9
8	Incident Mangement	9
8.1	Pollution Incident Response Procedures.....	10
8.2	Raising the Alarm	10
8.3	Immediate Actions	10
	8.3.1 Locatlon of Emergency Control Devices	10
9	Reporting	10
10	Training.....	11
10.1	Role Specific Training	11
11	Testing and Review	11
11.1	Testing.....	11
11.2	Review.....	12
	APPENDIX 1 Emergency Control Devices.....	13
	APP.1.1 Indicative Map of Devices	13
	APP.1.2 List and Location of Devices.....	15
	APPENDIX 2 Location of Drainage Lines	17
	APPENDIX 3 Facility Risk Assessment	19
	APPENDIX 4 Incident Management Flowchart.....	25

1 DOCUMENT PROPERTIES

Table 1 below outlines the Document Approval for this Plan as well as details of testing completed and proposed next test date.

Table 2 below provides a summary of changes made to this PIRMP.

Table 1 – Document Approval



Plan Name	Pollution Incident Response Management Plan (PIRMP)				
Facility Name	Central Waste Station	ABN	44 604 989 433	EPL N°.	13013
Address	8 Styles Street, Kurri Kurri NSW 2327				
Current Version	7.0	Date	27/02/2026	Planned Review Date	November 2027
Document owner	Ian Davies – NSW SHEQ Manager	Approved by	Kevin Daly – General Manager NSW		
Signature		Signature			
Company Rep.	Ian Davies – NSW SHEQ Manager - Phone 0429 494 909 - ian.davies@rcg.com.au				
Testing details					
Date of last test	23/02/2026	Date of next Test	January 2027		

Table 2 – Summary of changes

Version	Summary of Changes	Issue Date
Versions 1 – 4	Refer SHEQ Manager for copies of repealed plans	
Version 5	Updated to reflect changes to operational conditions and key personnel	28/02/2024
Version 6.0	Updated to new template. Changes to key personnel within the business. Change company name from Central Waste Station to Recycle Central Group. Updated references to Emergency Management Plans and associated documents.	08/07/2025
Version 7.0 (this Plan)	Updated to reflect changes to management personnel and details of testing. Future changes to PIRMP testing details will not result in a change to revision N°.	27/02/2026

2 DEFINITIONS AND ABBREVIATIONS

Terms and abbreviations used throughout this plan are provided below.

Table 3 – Definitions

Reference	Definition
Dangerous Incident	<ul style="list-style-type: none"> As defined by Section 37 of the WHS Act – any incident that exposes a worker or any other person to a serious risk resulting from immediate or imminent exposure to: An uncontrolled escape, spillage of a substance, or An uncontrolled implosion, explosion or fire, or An uncontrolled escape of gas or steam, or An uncontrolled escape of a pressurised substance, or Electric shock, or The fall or release from a height of any plant, substance or thing, or The collapse, overturning, failure or malfunction of, or damage to, any plant that is required to be authorised for use in accordance with the Regulations The collapse or partial collapse of a structure, or The collapse or failure of an excavation or any shoring supporting an excavation or tunnel, or The inrush or water, mud or gas in workings in an underground excavation or tunnel, or The interruption of the main system of ventilation in an underground excavation or tunnel, or Any other event prescribed by the Regulations But does not include an incident of a prescribed kind.

Reference	Definition
Emergency	Any event that arises from an internal or external source, that requires immediate response that has potential to cause harm to personnel or visitors to the facility.
EMP	Emergency Management Plan – Separate, specific plan for the management and control of emergencies within a given work area
ERP	Emergency Response Procedures – Separate documents that outline the processes and actions required to for the management and control of specific emergency scenarios within a workplace.
EPA	Environmental Protection Agency NSW
IMS	Integrated Management System addressing Safety, Environmental and Quality management processes in accordance with ISO Standards 45001, 14001 and 9001 respectively.
Material Harm	<p>Meaning of material harm to the environment as defined by Section 147 of the POEO Act 1997 Harm to the environment is material if:</p> <ul style="list-style-type: none"> It involves actual or potential harm to the health or safety of human beings or to ecosystems that is not trivial, or It results in actual or potential loss or property damage of an amount, or amounts in aggregate, exceeding \$10,000 (or such other amount as is prescribed by the Regulations), and <p>Loss includes the reasonable costs and expenses that would be incurred in taking all reasonable and practicable measures to prevent, mitigate or make good harm to the environment. It does not matter that harm to the environment is caused only in the premises where the pollution incident occurs.</p>
PIRMP	Pollution Incident Response Management Plan in accordance with Section 153C of the Protection of the Environment Operations Act 1997.
Pollution	<p>Pollution means</p> <ul style="list-style-type: none"> Water pollution, or Air pollution, or Noise pollution, or Land pollution.
Pollution incident	As defined in Schedule 6 of POEO Act, a Pollution Incident means – an incident or set of circumstances during or as a consequence of which there is or is likely to be a leak, spill or other escape or deposit of a substance, as a result of which pollution has occurred, is occurring or is likely to occur. It includes an incident or set of circumstances in which a substance has been placed or disposed of on premises, but it does not include an incident or set of circumstances involving only the emission of any noise.
Serious injury or illness	<p>As defined by Section 36 of the WHS Act – serious injury or illness of a person means any injury or illness requiring the person to have:</p> <ul style="list-style-type: none"> Immediate treatment as an in-patient in a hospital, or Immediate treatment for <ul style="list-style-type: none"> The amputation of any part of his or her body, or A serious head injury, or A serious eye injury, or A serious burn, or The separation of his / her skin from an underlying tissue (e.g., degloving or scalping), or A spinal injury, or The loss of a bodily function, or Serious lacerations, or Medical treatment within 48 hours of exposure to a substance <p>And includes any other injury or illness prescribed by the Regulations but does not include an illness or injury of a prescribed kind.</p>
Site	The overall site compound which includes the Recycling Plant covered by the EPL. References to ‘the Site’ throughout this Plan refers to the property and the infrastructure contained within the red outline as shown in Image 1 .

3 SITE CONTACT INFORMATION

Recycle Central – Kurri Kurri Key Contact Details

Title	Name	Office contact	Mobile
Operations Manager	David Gater	1800 180 180	0467 813 093
SHEQ Manager	Ian Davies	1800 180 180	0429 494 909
Yard Manager	David Shortall	1800 180 180	0420 557 586
Environmental Advisor	Matthew Deegan	1800 180 180	0400 044 322
Transport Manager	Clint Dawson	1800 180 180	0488 776 790
Projects Manager	Ray Nielsen	1800 180 180	0477 887 765
Emergency Contacts (24 hour)			
Title	Name	Mobile	
Yard Manager	David Shortall	0420 557 586	
Operations Manager	David Gater	0467 813 093	
Environmental Advisor	Matthew Deegan	0400 044 322	
Projects Manager	Ray Nielsen	0477 887 765	

Incident notification contact details are shown within Table 5 – Relevant Authorities Contact Details.

4 PURPOSE SCOPE AND OBJECTIVES

This Pollution Incident Response Management Plan (PIRMP) has been prepared in accordance with the requirements of [Part 5.7A Duty to prepare and implement Pollution Incident Response Management Plans](#) of the Protection of the Environment Operations Act 1997 (the POEO Act), [Chapter 4 Pollution incident response management plans](#) of the POEO (General) Regulation and the EPA’s Guideline: [Pollution Incident Response Management Plans](#).

4.1 SCOPE

This Plan sets out the processes required to respond to pollution incidents at Recycle Central’s Kurri Kurri facility (the Facility), 8 Styles Street Kurri Kurri, NSW 2327. This facility operates under Environmental Protection Licence N^o. [13013](#).

The following scheduled activities are undertaken on this site:

- Resource recovery
- Waste storage

Specific emergency response processes are set out within the Emergency Management Plan (EMP) for the Facility; hard copies of this PIRMP and the ERPs for the facility will be available within the following locations on site:

- Weighbridge office
- Recycling Plant Control Room

A copy of this Plan shall be made available to the public via the Recycle Central [website](#).

4.2 OBJECTIVES

The objectives of this Plan are to:

- Ensure comprehensive and timely communication of pollution incidents to relevant interested parties including staff at the Facility, Regulators, emergency services and surrounding sensitive receivers – refer Table 5 – Relevant Authorities Contact Details.
- Minimise the risk of a pollution incident at the Facility through effective hazard identification, risk assessment, and implementation of effective actions to prevent and mitigate potential harm and

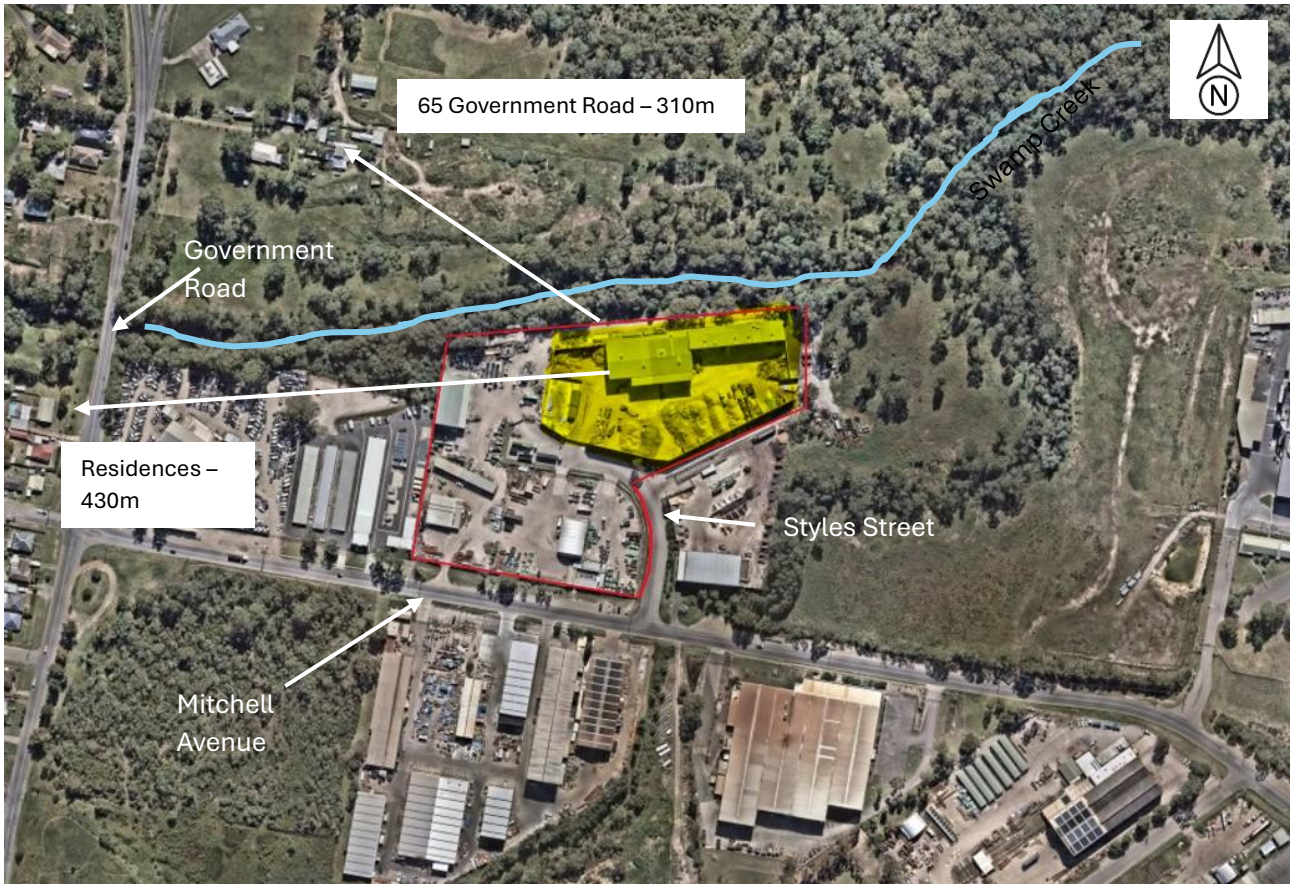
- In the event of an incident, provide the resources to coordinate an appropriate and timely response.

Note: Contact information is available within Table 5 – Relevant Authorities Contact Details.

4.3 LOCATION

The Facility is located at 8 Styles Street Kurri Kurri, NSW 2327. The Environmental Protection License applies to the areas indicated by the yellow highlighted section in Image 1 below. Arrows and markings indicate the nearest sensitive receivers to the facility.

Image 1 – Kurri Kurri facility location



Additional maps containing details of drainage lines and the locations of Emergency Control Devices are available within APPENDIX 2 .

4.4 HOURS OF OPERATION

The table below sets out the hours of operation as permitted by Limit Condition L4 within the EPL for the Facility. No activities are to be undertaken outside these approved hours.

Table 4 – Permitted Operational Hours

Activity	Times allowed	Permissible days
Construction work activities	0700 to 1800	Monday through Friday (inclusive).
Construction work activities	0700 to 1300	Saturdays
Recycling plant operations	24 hours	Monday through Saturday (inclusive)
Concrete crushing	0700 to 1800	Monday through Friday (inclusive).
All work activities	N/A	No works permitted Sundays or Public Holidays

5 RESPONSIBILITIES

The roles and responsibilities set out below relate to the Facility.

Position / Role	Responsibilities
PIRMP and EMP implementation and activation	<p>David Shortall – Yard Manager 0420 557 586</p> <p>Dylan Presbury – Plant Supervisor 0477 666 389 Alternative contact person</p> <p>Matthew Deegan – Environmental Advisor 0400 443 220</p>
Notification of Emergency Services	<p>David Shortall – Yard Manager 0420 557 586</p> <p>Matthew Deegan – Environmental Advisor 0400 443 220</p> <p>Toby Roach – Plant Supervisor 0476 273 226</p>
Managing response to Pollution Incidents	<p>David Shortall – Yard Manager 0420 557 586</p> <p>Matthew Deegan – Environmental Advisor 0400 443 220</p>
Notification to Regulators and authorities	<p>Kevin Daly – General Manager NSW 0449 163 056 Alternative contact person</p> <p>David Gater – Operations Manager 0467 813 093 Alternative contact person</p> <p>Ian Davies – NSW SHEQ Manager 0429 494 909</p>

6 NOTIFICATION REQUIREMENTS

The General Manager or his delegate is responsible to notify relevant authorities of any Pollution Incident and/or WHS Notifiable Incident associated with the operation of the Facility.

Table 5 – Relevant Authorities Contact Details

Department / Service	Contact Number
Recycle Central – Accident Reporting	Internal use only – As per Emergency Response Plans
Emergency Services (all)	000
Fire – Kurri Kurri Fire Station	000 – local – 119 Lang Street Kurri Kurri – (02) 4927 2549
Ambulance – Kuri Kurri Ambulance Station	000 – 46 Alexandra Street Kurri Kurri
Police – Kurri Kurri Police Station	000 – 121 Lang Street Kurri Kurri – (02) 4937 1593
John Hunter Hospital	(02) 4921 3000
EPA Environment Line	131 555
Ministry of Health – Sydney	(02) 9391 9000

SafeWork NSW	131 050
Cessnock City Council	(02) 4993 4100 (general) (02) 4993 4100 (after hours emergency)

6.1 COMMUNITY AND NEIGHBOUR COMMUNICATION

Due to the low risks associated with the facility and the low potential for incidents resulting in significant environmental harm, notifications with neighbours will vary based on the type and volume of spill and the potential for impact outside of the facility. These variances will consider weather conditions such as wind velocity and the prevailing direction and volume of rainfall.

Where an incident on site has the potential to impact our surrounding neighbours, communication with those potentially affected will be via phone and/or face to face. All such correspondence will include details of the incident and the potential impacts.

Records of this correspondence shall be maintained.

7 MANAGEMENT OF RISK

[Section 72\(a\)-\(b\) POEO Regulation \(General\)](#)

This section identifies relevant safety and environmental issues that may result in harm to human health and the surrounding environment, as well as the control and mitigation measures to be implemented to minimise the associated risk. All aspects of risk management shall be managed in accordance with the Risk Management Framework contained within the IMS.

A risk assessment for the operations of the Facility has been completed identifying the potential hazards to human health and the surrounding environment; a copy of the relevant sections of this Risk Assessment is provided within APPENDIX 3 .

The assessed level of risk was completed using the IMS Risk Consequence and Likelihood Matrix as depicted in Image 2 below.

Image 2 – Risk Matrix

Risk Acceptance				LIKELIHOOD (HL to VU)				
EXTREME	HIGH	MODERATE	LOW	Highly Likely	Likely	Possible	Unlikely	Very Unlikely
Unacceptable level of risk – works not to progress	Reassess and implement harder controls to reduce risk	Acceptable level of risk – reassess to reduce where possible	Acceptable level of risk	Highly likely to occur with the failure of documented controls	Likely to occur with the failure of documented controls	Possible to occur; would require failure of basic or hard controls	Unlikely to occur; failure of multiple hard or basic controls required	Very Unlikely to occur; failure of multiple hard controls required
Potential outcomes / impacts by type				HL	L	U	R	VR
WHS / People	Enviro	Quality / Finance / Asset						
Fatality / Serious permanent disability / Self-Harm / Suicidal	Significant environmental impact with long term effect, major remediation cost – material harm ¹ Breaches and Fines	Significant rework required. Estimated greater than \$5m in damage or cost to rectify.	5	EXTREME	EXTREME	HIGH	MODERATE	LOW
Minor permanent physical disability or Permanent Psychological Injury	Serious impact with medium to long-term effect, significant remediation cost – material harm ¹ Breaches and Fines	Large amount of rework. Estimated between \$1m and \$5m in damage or cost to rectify.	4	EXTREME	HIGH	MODERATE	MODERATE	LOW
Short-term physical or psychological injury that may result in LTI or Actual / Potential Breach	Moderate level of impact with short to medium term effect, moderate remediation cost – material harm ¹ Breaches and Fines	Moderate level of rework. Estimated between \$100k and \$1m in damage or cost to rectify.	3	HIGH	HIGH	MODERATE	LOW	LOW
Physical or psychological injury that may result in RWI or MTI or Safety breach	Minor, short term rectified with minor remediation work. <i>Potential</i> material harm based on cost and/or breaches.	Low level of rework. Estimated between \$10k and \$100k in damage or cost to rectify	2	HIGH	MODERATE	MODERATE	LOW	LOW
Minor Incident causing First Aid Injury or Poor Health	Negligible / no lasting impact rectified with basic remediation work. No material harm	Basic level of rework. Estimated less than \$10k in damage or cost to rectify	1	MODERATE	MODERATE	LOW	LOW	LOW

¹ Material Harm in accordance with Section 147 of the Protection of the Environment Operations Act 1997

7.1 PRE-EMPTIVE ACTIONS

Section 72(c) POEO Regulation (General)

In addition to the preventive and mitigating controls included in the risk assessment for the Facility, the following actions and processes shall be utilised in accordance with the IMS:

- Workplace Inspections for WHS and Environmental compliance.
- Internal Audits.
- Work Activity Engagements with management representatives observing work practices across the facility to identify areas for improvement.

7.2 POTENTIAL POLLUTANT MATERIALS

Section 72(a)-(b) POEO Regulation (General)

All potential materials and/or hydrocarbons used as part of the operations, except for hydrocarbons contained within / as part of operational mobile plant, are stored outside of the footprint of the Recycling Plant where the EPL applies; controls for the management of these materials are set out within the Risk Register for the Site.

Emergencies associated with such materials shall be managed in accordance with the Emergency Management Plan for the Site.

8 INCIDENT MANGEMENT

All incidents, regardless of actual harm, including Near Hits shall be reported as soon as practicable to the supervisor of the work area or the Yard Manager. Once the immediate situation is controlled, the relevant supervisor / manager shall notify a SHEQ representative – refer Incident Management process flowchart available within APPENDIX 4 .

All incidents shall be managed be managed in accordance with the IMS Manual, which is available for Recycle Central staff via the company Intranet.

8.1 POLLUTION INCIDENT RESPONSE PROCEDURES

Pollution Incident and Emergency Response procedures are provided within the EMP developed for the Site. The EMP contains specific Emergency Response Procedures (ERPs) for each foreseeable emergency. In the event of an emergency on site, all personnel shall follow the EMP and the relevant Emergency Response Procedures.

A copy of the Emergency Management Plan is available on site in the Weighbridge office and the Recycling Plant Control Room.

8.2 RAISING THE ALARM

[Section 72\(i\) POEO Regulation \(General\)](#)

In the event of an emergency within the facility, personnel who identify the potential emergency shall use the UHF Radio to notify all other personnel on site following the prompts below:

- Call clearly and calmly over UHF
 - **EMERGENCY – EMERGENCY – EMERGENCY**
- Wait for a response and provide the following information:
 - The **location** of the emergency.
 - Then **nature** of the emergency.
 - What **assistance** is required.

All other personnel are to keep the UHF channel open (i.e. do not use) during the emergency response.

8.3 IMMEDIATE ACTIONS

All personnel shall assist in the containment of any potential pollutant materials using emergency control devices provided across the Facility. As a minimum, personnel shall:

- Organise the required equipment and resources to prevent further harm.
- Establish delineation of the area to prevent unauthorised access or potential for materials to be spread by mobile plant or vehicles driving through the area.
- If there is a hydrocarbon spill, use materials such as dirt to contain and prevent entry into drainage system until spill kit equipment can be applied.
- Assist in the application of control devices under the direction of the Yard Manager / Emergency Controller for the facility.

8.3.1 LOCATION OF EMERGENCY CONTROL DEVICES

[Section 72\(f\) POEO Regulation \(General\)](#)

Details of emergency control devices for the Facility are provided within APPENDIX 1 .

9 REPORTING

[EPL Clause 6 Reporting Conditions – R1](#)

Recycle Central shall ensure compliance with this Plan is reported as part of the Annual Return to be completed in accordance with Clause 6 of the EPL for the Facility. The following information shall be included within the Annual Report:

- Statement confirming that this PIRMP has been prepared in accordance with Section 153A of the POEO Act.
- Summary of complaints received.
- A copy of the PIRMP is available on site – refer Clause 4.1.
- Statements of compliance for the following:
 - Licence Conditions
 - Load based Fee

- Publishing of Pollution Monitoring data
- EMS and associated processes.

10 TRAINING

Section 72(m) POEO Regulation (General)

All Recycle Central employees receive induction training as part of their employment; this includes environmental awareness training outlining environmental requirements and commitments.

Nominated staff will be trained in Emergency Management, including the implementation of this Plan.

Trained staff will be able to follow procedures and ensure that identified hazards / foreseeable emergencies are controlled quickly without harm to personnel and the surrounding environment. Training will include, as a minimum the following:

- Protocol for raising an emergency alarm.
- Names and contact details for Emergency Controllers.
- Names and contact details for First Attack Firefighters.
- Processes to be followed in the event of an emergency to facilitate a safe evacuation of the site in a timely and orderly manner
 - Emergency exit points, evacuation routes and assembly areas.
- Location of fire hoses and extinguishers within the facility.
- Names of First Aid Officers.
- Location of First Aid Kits within the facility.

Accountable personnel will be trained to understand the requirements for external communication with emergency services. All mobile plant operators will be trained in the effective use and application of spill kit materials to control chemical and/or hydrocarbon spills on site.

All personnel, including subcontractors working within the facility shall be provided with training on the overarching requirements of this Plan.

Details of training provided, including refresher dates shall be maintained within the SHEQ Management System.

10.1 ROLE SPECIFIC TRAINING

Nominated personnel shall be trained in the following areas with respect to the effective implementation of this Plan:

- Emergency Controller – the Yard Manager shall be the Emergency Controller for the site.
- Fire Wardens
- First Aid Officers
- Spill control (general)

Details of responsible personnel shall be displayed in prominent locations around the facility using FORM 0003 *Emergency Response Personnel*.

Training records shall be maintained within the SHEQ Management System.

11 TESTING AND REVIEW

Section 72(n) POEO Regulation (General)

11.1 TESTING

Testing of this Plan will be conducted to ensure that the information included in the plan is accurate, current, relevant to the Facility, and understood by responsible personnel. Tests will be used to identify areas for improvement to ensure the Plan remains effective.

Testing will include completion of exercise and/or drills on site or desktop simulations of incidents. Testing will cover all the components of the PIRMP, including the effectiveness of the training.

A register of tests completed will be maintained within the SHEQ Management System.

Internal audits will also be completed to ensure the Plan is compliant to [Clause 72](#) of the POEO Regulation, to verify the level of effectiveness of implementation and to ensure competencies required by personnel are current.

Additional tests shall be conducted within 1 month of any pollution incident within the facility.

The dates of the last test and next planned test are displayed within Table 1 – Document Approval.

11.2 REVIEW

Reviews of this Plan will be completed in the where significant changes are made to the operations, or where the level of risk increases. Additional reviews will be completed after any pollution incident.

A summary of changes to this Plan will be maintained within Table 2 – Summary of changes.







APPENDIX 1 **Emergency Control Devices**

APP.1.1 Indicative Map of Devices



APP.1.2

List and Location of Devices

Equipment	Symbol on plan	Locations
Eye Wash Stations		Sediment Pond
First Aid Kits		Recycling Plant Control Room
		Weighbridge
UHF / 2 Way Radios	N/A	Weighbridge
		Control Room
		Yard Manager
		Plant Operators (within mobile plant items)
		Workers on Foot
Spill Kits		Weighbridge
		Receiving Shed
		Main compound adjacent Diesel Tank
		Front gate adjacent weighbridge
		Water Treatment Plant
Fire Fighting Equipment <ul style="list-style-type: none"> • Fire Extinguishers • Fire Hose Reels 	 	Weighbridge
		Multiple locations within Recycling Plant
		Adjacent Receiving Shed
		Multiple locations within Recycling Plant
		Front gate adjacent weighbridge
Personal Protective Equipment – as applicable to the tasks and/or emergency event e.g., <ul style="list-style-type: none"> • Gloves – rigger / cut resistant / chemical resistant. • Safety glasses – clear / tinted • Dust masks – minimum P2 • Hearing Protection – plugs / muffs 	 	All such equipment is available within the following locations: <ul style="list-style-type: none"> • Recycling Plant Control Room • Yard Manager’s Office at the Weighbridge • PPE Stores at Main Office and within storage container (for restocking of supplies)



APPENDIX 3 **Facility Risk Assessment**

Identified Environmental Aspects, potential Impacts and associated Preventive and Mitigating Controls.

Pollution Incident Response Management Plan

Location	Type	Activity or Function	Potential Hazard	Potential Risk Event	Initial Risk Rating	Preventive Controls	Controlled Risk Rating	Mitigating Controls	Residual Risk
Recycling Plant	WHS	Picking from belts	Uneven surfaces, trip hazards (waste on floor)	Lower leg injuries	High	Bins for reject materials placed within reach of workers to eliminate need for twisting movements to sight bins. Regular cleaning of picking room floors to remove spill waste materials. Provision of task specific training for all personnel	Low	Emergency Management plans developed and implemented for the facility. First Aid personnel in attendance to provide initial treatment and care. Regular planned and completed trials of emergency scenarios involving serious injuries to ensure readiness of personnel for such cases. Nominated Treating Doctors (NTD) available for expidited treatment	Low
Recycling Plant	Environmental	General operations	Solid waste generation and disposal	Impacts to landfills	Moderate	Control of received materials to reduce amount on non-recyclable materials received on site. Ensure full functionality of recycling plant and personnel to limit amount of recyclable materials going through to landfill stockpiles.	Low	Regular monitoring of processes and materials entering stockpiles to reduce potential waste to landfill	Low
Recycling Plant	WHS	General operations	Severe flooding event	Electrocution Drowning Struck by floating debris	Moderate	Lock down procedure and close facility, pump water out of facility starting from road entrance and moving towards creek (from high to low elevation)	Low	Emergency Management plans developed and implemented for the facility. First Aid personnel in attendance to provide initial treatment and care. Regular planned and completed trials of emergency scenarios involving serious injuries to ensure readiness of personnel for such cases. Nominated Treating Doctors (NTD) available for expidited treatment	Low
Waste Floor (forecourt)	Environmental	General operations	Severe flooding event	Transportation of materials offsite within floodwaters	Moderate	Complex constructed with levy / embankment higher than the 1:100 year flooding event, preventing water ingress into yard. Existing drainage system designed to move water away from stockpiled materials. Entry and exit point would drain enough water from hardstand before significant impacts to stockpiles	Low	Engagement of vacuum pump on a regular basis to clean out sumps and sediment basin to maintain capacities and effectiveness of system	Low
Waste Floor (forecourt)	Environmental	Receipt and management of waste materials	Sediment contamination	Breaches of EPL and approvals	Moderate	Stormwater system on site draining to on-site sediment basin. Maintenance of drainage and sedimentation system to maintain effectiveness. Inspections as per documented Procedures and PIRMP	Moderate	Engagement of vacuum pump on a regular basis to clean out sumps and sediment basin to maintain capacities and effectiveness of system	Low
Waste Floor (forecourt) / Shed	Environmental	Receipt and management of waste materials	Receipt of petriscible materials	Potential breach of Environmental Protection Licence. Leakages causing contamination to product and waterways.	Moderate	Skip truck drivers undertake visual inspection prior to picking up bins; any suspected material is reported to client and Yard Supervisor. Contaminated bins are rejected and taken to licensed facility at client's cost. On site visual assessment of of all loads of waste material by competent personnel prior to tipping onto floor. Personnel trained in the safe handling of petriscible waste and use of correct PPE.	Moderate	Personnel to follow Safe Work Procedures for the handling and management of petriscible waste materials. All waste removed from site to landfill facility	Low
Material Stockpiles	WHS	Stockpile management	Raw and processed wood stockpiles	Ignition of stockpiles - fire	Low	Inspections of loads to identify potential dangerous substances and reject affected loads. Maintenance of mobile plant and equipment to reduce potential for hydrocarbon spills and contamination for timber. Stockpiles not to exceed conditions of the EPL	Low	N/A	Low
Waste Floor (forecourt)	WHS	Members of the public delivery waste	Non-Recycle Central personnel on foot in operational area	Struck by moving plant - Personnel being struck by moving plant resulting in serious injuries or fatalities	High	Skip bins must be untarped outside of the facility to reduce potential interactions. All vehicles must enter via the weighbridge where instructions to drivers are provided. Clear signage installed for drivers to follow. Drivers to remain in vehicle during inspection of load by Pickers. Pickers provide directions to drivers to nearest bay to unload. Drivers to remain in the footprint of their vehicle and not to walk around waste floor. Mobile plant operators familiar with truck and personnel movements around the doors where tipping takes place - operators to remain clear of public vehicles	Moderate	Emergency Management plans developed and implemented for the facility. First Aid personnel in attendance to provide initial treatment and care. Regular planned and completed trials of emergency scenarios involving serious injuries to ensure readiness of personnel for such cases. Nominated Treating Doctors (NTD) available for expidited treatment	Moderate

Pollution Incident Response Management Plan

Location	Type	Activity or Function	Potential Hazard	Potential Risk Event	Initial Risk Rating	Preventive Controls	Controlled Risk Rating	Mitigating Controls	Residual Risk
All operational areas	Environmental	General operations	Noise and vibration	Impacts to surrounding sensitive receivers. Breach of EPL conditions	Moderate	Plant operations only in accordance with Environmental Protection Licence conditions. All plant and equipment to be inspected on a daily basis and defects reported to Workshop via Gearbox. Regular planned servicing of all mobile plant and trucks. Comply with work procedures	Low	N/A	Low
All operational areas	WHS	General operations	Noise and vibration	Exposure to excessive and/or prolonged noise causing hearing damage and/or tinnitus	Moderate	All plant and equipment to be inspected on a daily basis and defects reported to Workshop via Gearbox. Regular planned servicing of all mobile plant and trucks. Comply with work procedures. Hearing protection to be worn around mobile plant where indicated by stickers on plant item - or at worker discretion if not mandated.	Low	Scheduled hearing tests conducted on all wages employees working within the complex to monitor hearing health	Low
Recycling Plant	WHS	General operations	Noise and vibration	Exposure to excessive and/or prolonged noise causing hearing damage and/or tinnitus	Moderate	Regular planned maintenance of machinery and components. Hearing protection to be worn in locations as sign posted	Low	Scheduled hearing tests conducted on all wages employees working within the complex to monitor hearing health	Low
Recycling Plant	WHS	Picking from belts	Moving parts / belts	Entanglement, crushing	Moderate	Workplace design to eliminate the need for personnel to climb onto conveyor assembly to reach materials - positioning or personnel on both side of belt. Shut down lanyard positioned for easy access in the event of an emergency. Regular inspections and maintenance of plant to reduce failures and monitor safety systems	Moderate	Emergency Management plans developed and implemented for the facility. First Aid personnel in attendance to provide initial treatment and care. Regular planned and completed trials of emergency scenarios involving serious injuries to ensure readiness of personnel for such cases. Nominated Treating Doctors (NTD) available for expedited treatment	Low
Waste Floor (forecourt)	WHS	Members of the public delivery waste	Mobile plant and vehicle movements	Interactions between public vehicles and mobile plant - Serious injuries / fatalities Asset damage	High	All vehicles must enter via the weighbridge where instructions to drivers are provided. Clear signage installed for drivers to follow. Dedicated load inspection area established adjacent main shed, clear of operating mobile plant. Pickers provide directions to drivers to nearest bay to unload. Camera system installed to monitor vehicle movements into the hardstand area.	Moderate	Emergency Management plans developed and implemented for the facility. First Aid personnel in attendance to provide initial treatment and care. Regular planned and completed trials of emergency scenarios involving serious injuries to ensure readiness of personnel for such cases. Nominated Treating Doctors (NTD) available for expedited treatment	Moderate
Waste Floor (forecourt)	WHS	Receipt and management of waste materials	Mobile plant and vehicle movements	Personnel being struck by moving plant resulting in serious injuries or fatalities	Extreme	Only essential personnel permitted to be on foot on the waste floor. Personnel on foot are not to enter operational areas of mobile plant until contact has been made with the operator and the machine has stopped operations. Personnel on foot to have access to a two-way radio at all times when accessing/entering work areas where there are operational mobile plant or vehicles - UHF 21 across yard and waste facility. All personnel are to be informed of the rules around moving plant and vehicles and to remain clear until safe to approach. All personnel required to wear high visibility clothing when entering areas where plant and vehicle movements are likely.	Moderate	Emergency Management plans developed and implemented for the facility. First Aid personnel in attendance to provide initial treatment and care. Regular planned and completed trials of emergency scenarios involving serious injuries to ensure readiness of personnel for such cases. Nominated Treating Doctors (NTD) available for expedited treatment	Low
All operational areas	WHS	General operations	Mobile plant and vehicle movements	Interactions between mobile plant items and/or mobile plant and trucks / other vehicles	Moderate	All mobile plant items to be fitted with UHF Radios, reversing alarms and flashing lights. Positive communication between operating plant items before passing. Light vehicles to remain clear of mobile plant operations - public vehicles only permitted at shed doors to unload.	Moderate	Emergency Management plans developed and implemented for the facility. First Aid personnel in attendance to provide initial treatment and care. Regular planned and completed trials of emergency scenarios involving serious injuries to ensure readiness of personnel for such cases. Nominated Treating Doctors (NTD) available for expedited treatment	Low

Pollution Incident Response Management Plan

Location	Type	Activity or Function	Potential Hazard	Potential Risk Event	Initial Risk Rating	Preventive Controls	Controlled Risk Rating	Mitigating Controls	Residual Risk
Waste Floor (forecourt)	Environmental	Receipt and management of waste materials	Material (mud) tracking	Tracking of mud on site by vehicles leaving the facility - contamination of stormwater, Potential fines from council or other regulator	Moderate	Regular use of watercart on site to washdown hardstand to prevent buildup of dirt and sediment materials	Low	Regular engagement of street sweeper to clean Styles street from culdesac through to Australian Native Landscapes driveway	Low
Recycling Plant	WHS	Picking from belts	Manual Handling / ergonomics	Sprains and strains	Moderate	Positioning of personnel on both side of belt to eliminate need for personnel to reach for materials. Bins for reject materials placed within reach of workers to eliminate need for twisting movements to sight bins. Provision of task specific training for all personnel	Low	N/A	Low
Material Stockpiles	Environmental	Stockpile management	Increased levels of stockpiles	Stockpiles exceeding permissible heights as set out in the conditions of the EPL	Moderate	Complex Manager to monitor the height of all stockpiled materials and ensure contractors are engaged to process relevant materials (e.g. crushing and screening) for re-sale. Load out any materials that do not require further processing on a regular basis (e.g. timber stockpiles)	Low	Regular environmental inspections to monitor height of stockpiles, report findings and assign actions to the Complex Manager to address.	Low
Recycling Plant	WHS	Picking from belts	Handling waste materials	Cuts and abrasions	Moderate	Provision of task specific training for all personnel Mandatory compliance with PPE for hand and eye protection from material being handled	Low	N/A	Low
Waste Floor (forecourt) / Shed	Environmental	Handling of waste materials	Generation of excessive dust	Impacts to surrounding sensitive receivers	Moderate	Use of dust suppression mist system within the waste sheds to minimise dust generation from material movement.	Low	N/A	Low
All operational areas	Environmental	Plant and vehicle movements	Generation of excessive dust	Impacts to surrounding sensitive receivers	Moderate	Mobile plant (front end loaders) used to regularly clean concrete forecourt and driveways of accumulated materials. Use of watercart to suppress dust on all hardstand surfaces. Trucks and plant to operate at lower speeds when dust becomes visible until watercart can apply water.	Low	Regular engagement of street sweeper to clean concrete forecourt and Styles street from culdesac through to Australian Native Landscapes driveway	Low
Recycling Plant	Environmental	General operations	Fire within recycling plant	General fire risk as a result of fixed plant, accumulation of dust around hot parts	Moderate	Regular planned maintenance of machinery and components. Use of vacuum systems and compressed air to remove accumulated dust from around motors, bearings and rollers to eliminate potential for generation of heat potentially leading to fire	Low	Installation of fire fighting equipment within the plant in accordance with design and as per licence conditions. Planned inspections and testing of fire fighting equipment by external accredited personnel. Regular inspections and workplace monitoring to	Low
Recycling Plant	WHS	General operations	Fire within recycling plant	General fire risk as a result of fixed plant, accumulation of dust around hot parts	High	Regular planned maintenance of machinery and components. Use of vacuum systems and compressed air to remove accumulated dust from around motors, bearings and rollers to eliminate potential for generation of heat potentially leading to fire	Moderate	Installation of fire fighting equipment within the plant in accordance with design and as per licence conditions. Planned inspections and testing of fire fighting equipment by external accredited personnel. Regular inspections and workplace monitoring to ensure upkeep of maintenance and housekeeping.	Low
Recycling Plant	WHS	General operations	Excessive Dust	Respiratory irritations, disease. Eye irritation. Contact Dermatitis / skin irritations	Moderate	Use of dust suppression mist system within the waste sheds to minimise dust generation from material movement. Regular maintenance of the recycling plant to reduce accumulation of dust of surfaces and within access ways to/from the sorting rooms. Sorting rooms equipped with positive air pressure to largely eliminate dust from the working environment. Mandatory PPE to be worn as and where signposted.	Low	Regular workplace inspections to monitor compliance with Safe Operating Procedures, Housekeeping (maintenance) and use of correct PPE. Health monitoring completed on a planned and regular basis	Low
Material Stockpiles	Environmental	Stockpile management	Contamination of stockpiled materials	Reprocessing of materials - Increased energy consumption	Moderate	Complex Manager to monitor material stockpiles and ensure appropriate segregation of materials.	Low	Regular environmental inspections to monitor height of stockpiles, report findings and assign actions to the Complex Manager to address.	Low
Waste Floor (forecourt)	Environmental	Receipt and management of waste materials	Contaminated water entering adjacent waterways	Pollution of downstream waterways - increases in pH or turbidity of waterways	Moderate	Stormwater system on site draining to on-site sediment basin. Maintenance of drainage and sedimentation system to maintain effectiveness. Automatic water treatment plant used to balance pH and Turbidity of water in basin. Stored water used as part of dust suppression and to maintain capacity of the basin Inspections as per documented Procedures and PIRMP	Moderate	Engagement of vacuum pump on a regular basis to clean out sumps and sediment basin to maintain capacities and effectiveness of system	Low

Pollution Incident Response Management Plan

Location	Type	Activity or Function	Potential Hazard	Potential Risk Event	Initial Risk Rating	Preventive Controls	Controlled Risk Rating	Mitigating Controls	Residual Risk
Waste Floor (forecourt) / Sheds	WHS	Receipt and management of materials	Asbestos materials not identified within loads	Workers exposed to Asbestos Containing Materials (ACM) Asbestos related diseases such as mesothelioma	Moderate	<p>Skip truck drivers undertake visual inspection prior to picking up bins; any suspected material is reported to client and Yard Supervisor.</p> <p>Competent person to attend site and test material using hand held asbestos tester.</p> <p>Contaminated bins are rejected and taken to licensed facility at client's cost.</p> <p>On site visual assessment of all loads of waste material by competent personnel prior to tipping onto floor.</p> <p>Competent person tests suspect materials using hand held asbestos tester, contaminated materials reloaded and disposed of at client's expense.</p> <p>Personnel trained in the safe handling of asbestos and use of correct PPE.</p>	Low	<p>Safe Operating Procedures in place for the safe and effective management of asbestos contaminated materials in place.</p> <p>Personnel trained in the safe operating procedures.</p> <p>Emergency Management plans in place</p> <p>Regular planned and completed trials of emergency scenarios involving serious injuries to ensure readiness of personnel for such cases.</p>	Low

